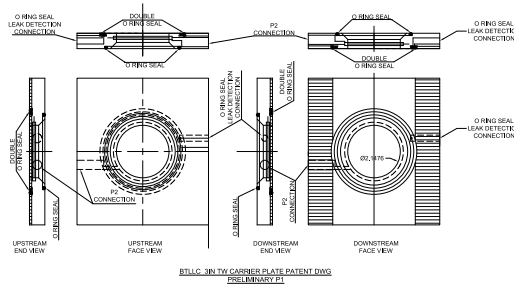


The TORUS™ Carrier Plate

Specifications



TORUS Single Chamber



TORUS Dual Chamber

Pipe Sizes		¼" to 60"
Flanges/Coupling		150, 300, 600, 900, 1500, 2500
Pressure		Vacuum - 20,000 psig
Temperature	Body	-20 to 700 F
	Electronics	-40 ⁰ to 150 ⁰ F (-40 ⁰ to 70 ⁰ C)
Accuracy		+/- .05% uncalibrated (.25 % calibrated)
Repeatability		0.02%
Turndown		10:1 Standard (Up to 15:1)
End Connection		Per customer request
Complies with API 22.2		Yes
Material Composition		Designed to match process
Process Flow Parameters		Re >100
Flow Direction		Bi-directional (Same accuracy either direction)
Process Conditions		Homogeneous through multiphase; Clean gas through heavy slurries
Meter body		Spool, wafer, insertable insert between flanges
Straight Pipe Run Required		0 up / 0 down
Coefficient of Discharge		.8 – 1.01

Specifications subject to change. Please contact Bell Technologies, LLC at 713-465-7575 or btllcsales@belltechnologiesllc.com for the most current date.

* Wiring length over 20 feet may require special power supply (eg. Battery)